



rurex

COMPLEX PRODUCTION OF PALLETS

DEAR CUSTOMERS

Satisfaction of our customer is our success.
I would like to introduce you an offer of **RUREX** company specializing in the production of **Dusseldorf** pallets and efficiently running on Polish market since 1997.

High standard of our production and advanced technology maintain the quality of pallets at a very high level which as a result let our company fulfil the requirements of our customers.

Advanced technological complex in Mikstat and the modern sawmill in Grabów nad Prosną allow our company to meet customers' expectations and fit into current changes into this business line.

Furthermore, RUREX company possesses own transport fleet, as well as domestic and foreign carriage thanks to which our company can provide fast and safe delivery to customers in the whole of Europe.

The following catalogue presents only a narrow range of our production capacity. Moreover, RUREX company cooperates with many partners from business line from all over Europe, which guarantee that we complete the tasks according to the highest market standards.

SATISFACTION OF OUR CUSTOMER IS OUR SUCCESS.

Zdzisław Mazurkiewicz

Director Zdzisław Mazurkiewicz

CONTENT

- 2 Introduction
- 3 Complex production of Dusseldorf pallets
- 4 Production of steel and plastic blocks
- 5 Assembly line for the production of steel pipes with the induction sealing machine
- 6 Sawmill in Grabów n. Prosną
- 7 Own transport fleet

COMPLEX PRODUCTION OF DUSSELDORF PALLETS

I would like to present you the Dusseldorf pallet of dimensions 600x800 which is the final product of our company. This type of pallet, highly considered by the entrepreneurs for its functionality and acceptable price, becomes the main instrument in the supply chain. Due to its small but convenient size, Dusseldorf pallet is popular especially in the smaller warehouses, where every inch matters, as well as valued by the larger corporations.

SPECIFICATION

LENGTH: 800 MM
WIDTH: 600 MM
TARE WEIGHT: 12,5 KG
NOMINAL LOAD: 500 KG



SPECIFICATION OF WOODEN COMPONENTS

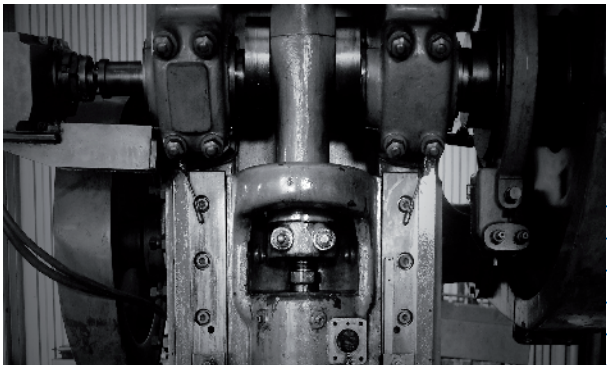
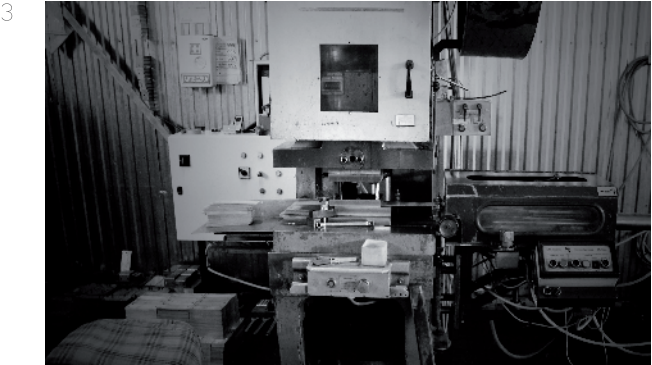
QUANTITY [PSC.]	COMPONENT OF PALLET	LENGTH [MM]	WIDTH [MM]	HEIGHT [MM]
7	TOP BOARD	600	80	20
2	LATERAL STRINGERBOARD	800	100	20
1	CENTRAL BOARD	800	80	20
3	BOTTOM BOARD	600	100	20



SPECIFICATION OF STEEL AND PLASTIC COMPONENTS

QUANTITY [PSC.]	COMPONENT OF PALLET	DIMENSIONS [MM]
6	BLOCK MADE OF STEEL PROFILED IN U	78 x 98 x 60
3	PLASTIC BLOCK	80 x 98
3	LONG TUBULAR RIVETS	10 x 165
6	MIDDLE TUBULAR RIVETS	10 x 50
12	SHORT TUBULAR RIVETS	10 x 30
42	SCREWING NAIL	4.2 x 38

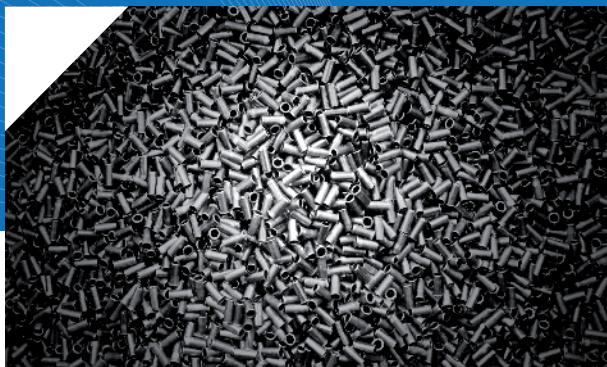
PRODUCTION OF STEEL AND PLASTIC BLOCKS



- 1 METAL BLOCKS
- 2 MACHINERY FOR PLASTIC BLOCKS PRODUCTION
- 3 MACHINERY FOR METAL BLOCKS PRODUCTION
- 4 PRODUCTION OF METAL BLOCKS

ASSEMBLY LINE FOR THE PRODUCTION OF STEEL PIPES WITH THE INDUCTION SEALING MACHINE

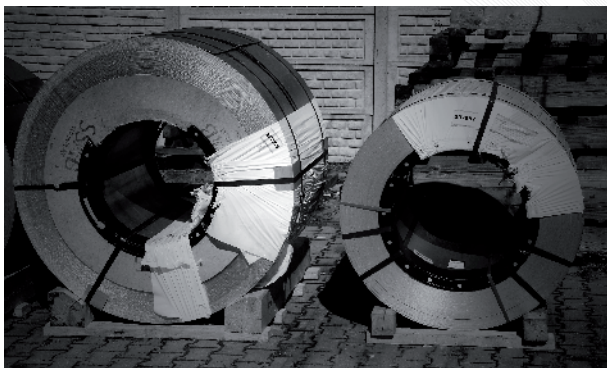
1



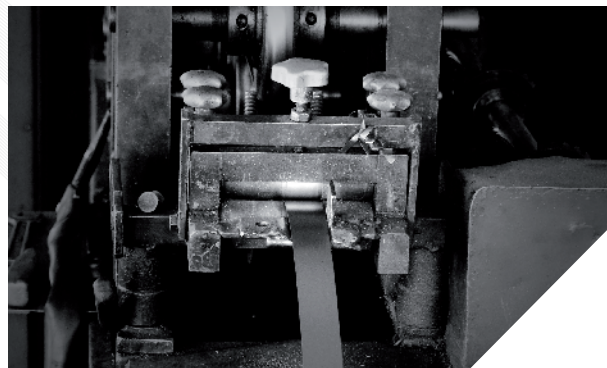
2



3



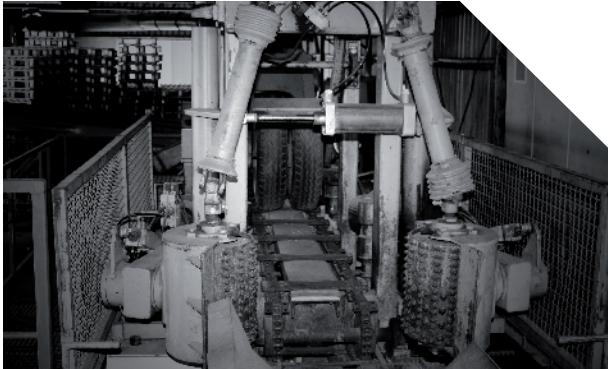
4



- 1 STEEL TUBULAR RIVETS
- 2 STEEL PIPES
- 3 STEEL COILS
- 4 ROLLFORMERS FOR PIPES PRODUCTION

SAWMILL IN GRABÓW N. PROSNA

The whole process of pallet assembly takes place on the sawmill in Grabów n. Prosna where everything starts from the import wooden raw material and ends with loading final product up trucks. Thanks to considerable investments, the sawmill is equipped with high-tech machinery and sawmilling line which enables RUREX company become self-sufficient also in the production of wooden components of pallets.



1

2



3

- CHIPPER CANTER LINK 1
- FULL GATE FOD DTRB 63 2
- FULL GATE FOD DTRB 63 3

OWN TRANSPORT FLEET



The basis of our job are the orders with several days lead time. However it happens that the customer needs the load of pallets immediately. Due to the fact that we are transport and shipping company as well, such situations are not a problem for us. Moreover Our fleet includes road trains, trucks along with mega trailer and standard tarpaulin trailers.

Thanks to own transport fleet, we are able to deliver pallets to almost all parts of the Europe and fulfil every order in a fast and reliable way.

THANK YOU FOR TAKING THE
TIME TO CONSIDER THIS OFFER.

We are looking forward to doing business with
you believing in mutually beneficial and fruitful
collaboration. In case of any questions, please
contact with us.



rurex

PPHU RUREX ZDZISŁAW MAZURKIEWICZ
UL. KALISKA 11 C, 63-510 MIKSTAT

TEL.: +48 62 731 06 65, FAX: +48 62 731 06 65
MOBILE: +48 601 58 67 04 (DEUTSCH), MOBILE: +48 607 76 90 08 (ENGLISH)

E-MAIL: BIURO@PPHU-RUREX.PL, WEB: WWW.PPHU-RUREX.PL